

PARA Membership & Quotas Report – 2012/13 Season

April 24, 2013

D. R. Bond – Membership Chairperson

Membership Levels

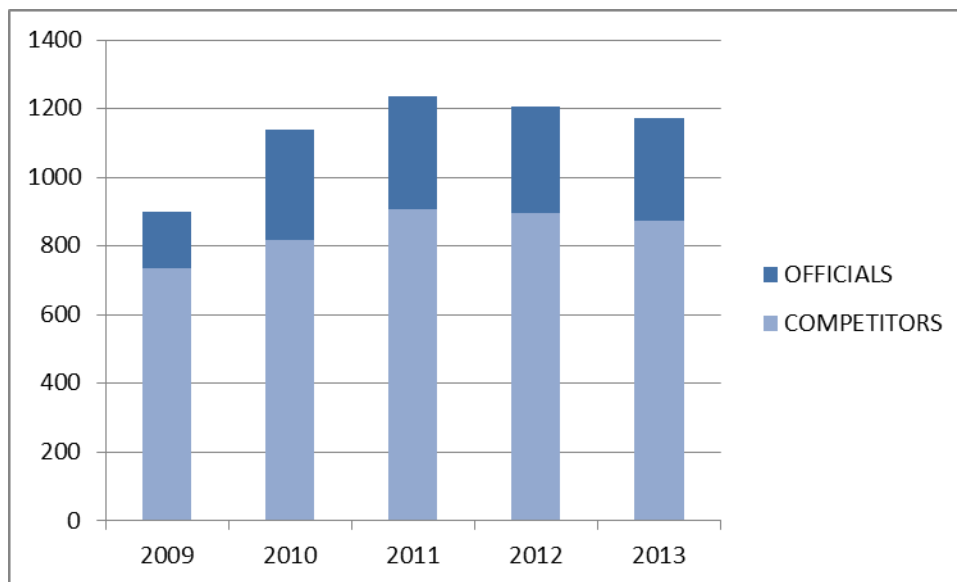
Overall Membership

The overall PARA Membership level saw a 3% reduction from 2011/12 to 2012/13 season.

2011/12 - 1215 total members

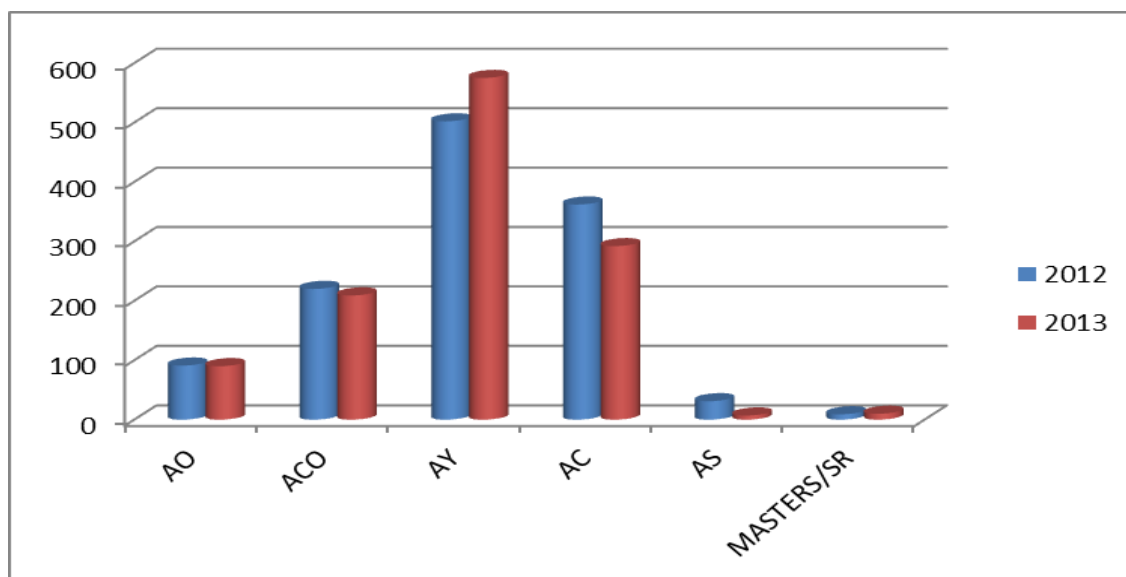
2012/13 - 1183 total members

The below chart illustrates the membership levels over the past 5 years separating the Total Membership between Officials and Competitors.



2011/12 vs. 2012/13 USSA Licensing Comparison

The below chart compares the USSA Licensing between the 2011/12 and 2012/13 Seasons showing where the changes Licensing changes have occurred. An analysis by Age Category is not possible from previous years due to the USSA Age Change which occurred in the 2012/13 Season. However, there is a comparable analysis between the 2011/12 Season and the 2012/13 Season.



Consolidation	2012	% CHG	2013	% CHG
AO	91	-6%	90	-1%
ACO	220	-5%	209	-5%
OFFICIALS	311	-5%	299	-4%
AY	502		575	15%
AC	362		292	-19%
AS	31		7	-77%
COMPETITORS	895	-1%	874	-2%
MASTERS/SR	9		10	11%
GRAND TOTALS	1215	-4%	1183	-3%

Comparison Membership by Region

2011/12		2012/13	
Row Labels	Count of USSA ID	Row Labels	Count of USSA ID
?	37	?	29
Central	407	Central	399
Eastern	313	Eastern	311
Northeastern	175	Northeastern	156
Western	286	Western	285
Grand Total	1218	#N/A	4
		Grand Total	1184

Note – the counts associated with the ‘?’ are the members classified as non-affiliated with a Club/Region. The counts associated with the ‘N/A’ are members identified as Pennsylvania Freestyle Ski Association.

2011/12		2012/13	
Row Labels	Count of USSA ID	Row Labels	Count of USSA ID
?	37	?	29
NULL	37	NULL	29
Central	407	Central	399
Liberty Mountain Racing Team	100	Liberty Mountain Racing Team	87
Ski Roundtop Race Club	147	Ski Roundtop Race Club	154
Ski Sawmill Race Club	6	Ski Sawmill Race Club	4
Tussey Mountain Alpine Racing Team	46	Tussey Mountain Alpine Racing Team	43
Whitetail Ski Ed Foundation Inc	108	Whitetail Ski Ed Foundation Inc	111
Eastern	313	Eastern	311
Bear Creek Race Club	1	Blue Mountain Race Team	147
Blue Mountain Race Team	163	Camelback Ski Team	79
Camelback Ski Team	74	Jack Frost/ Big Boulder Racing	85
Jack Frost/ Big Boulder Racing	74	Northeastern	156
NULL	1	Elk Mountain Ski Club	123
Northeastern	175	Shawnee Mountain Race Club	17
Elk Mountain Ski Club	128	Sno Mountain Ski Team	16
Shawnee Mountain Race Club	26	Western	285
Sno Mountain Ski Team	21	Blue Knob Race Club	9
Western	286	Deep Creek Winter Sports Team	103
Blue Knob Race Club	21	Hidden Valley Race Club PA	39
Deep Creek Winter Sports Team	102	Western PA Race Club	134
Hidden Valley Race Club PA	35	#N/A	4
Western PA Race Club	128	Pennsylvania Freestyle Ski Association	4
Grand Total	1218	Grand Total	1184

Observations

- Non-Affiliated Membership had a 21% decline
- Eastern and Western stayed consistent
- Central had a slight 2% decline
- Northeastern had a 11% decline

New Membership Analysis

The following tables illustrate the breakdown of our New Membership. PARA welcomed 180 new members shown by 'New Members by Region by Club', 'New Members by Region by License' and 'New Members by Region by Class by Gender'.

Row Labels	Count of USSA ID
?	3
NULL	3
Central	63
Liberty Mountain Racing Team	9
Ski Roundtop Race Club	31
Tussey Mountain Alpine Racing Team	7
Whitetail Ski Ed Foundation Inc	16
Eastern	46
Blue Mountain Race Team	16
Camelback Ski Team	14
Jack Frost/ Big Boulder Racing	16
Northeastern	12
Elk Mountain Ski Club	10
Shawnee Mountain Race Club	1
Sno Mountain Ski Team	1
Western	54
Deep Creek Winter Sports Team	16
Hidden Valley Race Club PA	13
Western PA Race Club	25
#N/A	2
Pennsylvania Freestyle Ski Association	2
Grand Total	180

Count of USSA ID	Column Labels						Grand Total
	AY	AS	AC	AM	AO	ACO	
Row Labels	AY	AS	AC	AM	AO	ACO	Grand Total
?	1			1	1		3
Central	46	1	5		11		63
Eastern	36		3		3	4	46
Northeastern	12						12
Western	47	1	3		2	1	54
#N/A	2						2
Grand Total	144	2	11	1	17	5	180

Count of USSA ID		Column Labels																							
Row Label	U8		U8 Total	U10		U10 Total	U12		U12 Total	U14		U14 Total	U16		U16 Total	U18		U18 Total	U21		U21 Total	Total	Grand Total		
	F	M		F	M		F	M		F	M		F	M		F	M		F	M					
?										1	1											2	2	3	
Central	4	3	7	9	10	19	9	3	12	3	6	9	1	3	4	1	1					3	8	11	63
Eastern				9	6	15	9	4	13	6	4	10		1	1							1	6	7	46
Northeastern		2	2	4	2	6	1	2	3		1	1													12
Western	5	10	15	15	3	18	3	6	9	4	3	7	1		1					1	1		3	3	54
#N/A	1		1		1	1																			2
Grand Total	10	15	25	37	22	59	22	15	37	13	15	28	2	4	6	1	1	1	1	1	4	19	23	180	

Count of USSA ID		Column Labels																	
Row Label	F							F Total	M							M Total	Grand Total		
	U8	U10	U12	U14	U16	U18		U8	U10	U12	U14	U16	U21						
?														1	2	3	3		
Central	4	9	9	3	1	1	3	30	3	10	3	6	3	8	33	63			
Eastern		9	9	6			1	25	6	4	4	1	6	21	46				
Northeastern		4	1					5	2	2	2	1	7	12					
Western	5	15	3	4	1			28	10	3	6	3	1	3	26	54			
#N/A	1							1	1				1	2					
Grand Total	10	37	22	13	2	1	4	89	15	22	15	4	1	19	91	180			

Observations

New membership is

- Made up of 54% U10 and younger when you remove the new members with the AO/ACO Membership Category from the equation.
- Made up of 23% of U12 when you remove the new members with the AO/ACO Membership Category from the equation.
- Made up of 18% of U14 when you remove the new members with the AO/ACO Membership Category from the equation.
- Made up of 55% female when you remove the new members with the AO/ACO Membership Category from the equation.

Age Classification Analysis

The following analysis reworks the 2011/12 Membership data which had been using the previous USSA 'J' Age Classification and mapping that Membership into the USSA 'U' Age Classification.

Total Membership

2011/12 Membership - Re-Mapped Data to the USSA 'U' Age Classifications

Count of USSA ID	Column Labels								Grand Total
Row Labels	0	U10	U12	U14	U16	U18	U21	#N/A	Grand Total
?			1			1	3	32	37
NULL			1			1	3	32	37
Central	23	27	72	72	56	34	12	111	407
Eastern	19	14	65	63	47	23	13	69	313
Northeastern	11	11	40	33	22	12	6	40	175
Western	36	29	49	57	39	10	7	59	286
Grand Total	89	81	227	225	164	80	41	311	1218

2012/13 Membership - USSA 'U' Age Groupings

Count of USSA ID	Column Labels								Grand Total	
Row Labels	U8	U10	U12	U14	U16	U18	U21	SR	Grand Total	
?				2	1	1	5	1	19	29
Central	7	40	67	65	57	43	2	2	116	399
Eastern	1	30	58	59	49	33	7	1	73	311
Northeastern	4	16	28	30	25	11	3	1	38	156
Western	16	46	59	50	33	14	3		64	285
#N/A	1	2		1						4
Grand Total	29	134	212	207	165	102	20	5	310	1184

Observations

- U12/14 had a 8% reduction from 2011/12 to 2012/13
- U18/U21 total members are essentially the same primarily because of the U18 reclassification
- U16 total members are essentially the same which would be expected since the age changes effected the same members
- U10 total members are significantly increased however the data from 2011/12 is insufficient to understand how many of the USSA 'J6' members which were reclassified are in the 2012/13 numbers.

Competition Membership as a % of the Total Competitors

2011/12 Membership - Re-Mapped Data to the USSA 'U' Age Classifications

Count of USSA ID		Column Labels						
Row Label		U10	U12	U14	U16	U18	U21	Grand Total
?		0.00%	0.12%	0.00%	0.00%	0.12%	0.37%	0.61%
Central		3.30%	8.80%	8.80%	6.85%	4.16%	1.47%	33.37%
Eastern		1.71%	7.95%	7.70%	5.75%	2.81%	1.59%	27.51%
Northeastern		1.34%	4.89%	4.03%	2.69%	1.47%	0.73%	15.16%
Western		3.55%	5.99%	6.97%	4.77%	1.22%	0.86%	23.35%
Grand Total		9.90%	27.75%	27.51%	20.05%	9.78%	5.01%	100.00%

2012/13 Membership as a % of the Total Competitors

Count of USSA ID		Column Labels							
Row Label		U8	U10	U12	U14	U16	U18	U21	Grand Total
?		0.00%	0.00%	0.00%	0.23%	0.12%	0.12%	0.58%	1.04%
Central		0.81%	4.60%	7.71%	7.48%	6.56%	4.95%	0.23%	32.34%
Eastern		0.12%	3.45%	6.67%	6.79%	5.64%	3.80%	0.81%	27.27%
Northeastern		0.46%	1.84%	3.22%	3.45%	2.88%	1.27%	0.35%	13.46%
Western		1.84%	5.29%	6.79%	5.75%	3.80%	1.61%	0.35%	25.43%
#N/A		0.12%	0.23%	0.00%	0.12%	0.00%	0.00%	0.00%	0.46%
Grand Total		3.34%	15.42%	24.40%	23.82%	18.99%	11.74%	2.30%	100.00%

Observations

- 48% of the competitors are in the U12/14 Age Category
- 19% of the competitors are in the U16 Age Category
- 19% of the competitors are in the U8/U10 Age Category
- 14% of the competitors are in the U18/U21 Age Category

Quotas

Quotas remained relatively the same from 2011/12 primarily due to little movement with the introduction of the 2012/13 USSA 'U' Age Classifications.

PARA Membership 2012/ 2013 Season

Report Date: 4/26/2013

Class >>		U10&younger				U14/U12				U16				U18				U21				SR											
Region		Western	Central	Eastern	North-eastern	Western	Central	Eastern	North-eastern	Western	Central	Eastern	North-eastern	Western	Central	Eastern	North-eastern	Western	Central	Eastern	North-eastern	?	Western	Central	Eastern	North-eastern							
Age Class >>>		too young				U14/U12				U16				U18				U21				SR											
PARA Membership		M	32	22	16	11	81	59	71	57	26	213	18	40	21	11	90	7	26	18	1	52	2	2	7	5	16	1	3	2	1		
by Region + Gender		F	28	21	13	8	70	50	58	58	31	197	15	14	28	11	68	8	17	14	10	49	1	1	0	0	2	0	0	0	0		
Total		60	43	29	19	151	109	129	115	57	410	33	54	49	22	158	15	43	32	11	101	3	3	7	5	18	1	3	2	1	0		
PARA Distribution by Region + age class		% of Total	40%	28%	19%	13%	100%	27%	31.5%	28%	14%	100%	21%	34%	31%	14%	100%	15%	43%	32%	11%	100%	17%	17%	39%	28%	0%	100%	14%	43%	29%	14%	0%
Gender Breakdown in Region		%M	53%	51%	55%	58%	54%	54%	55%	50%	46%	52%	55%	74%	43%	50%	57%	47%	56%	56%	9%	51%	67%	67%	100%	100%	0%	89%	1	100%	100%	1	0%
		%F	47%	49%	45%	42%	46%	46%	45%	50%	54%	48%	45%	26%	57%	50%	43%	53%	44%	44%	91%	49%	33%	33%	0%	0%	0%	11%	0	0%	0%	0	0%
Age Class >>>		too young				U14/12				U16																							
Quotas		slots					95				75																						
		regional					5				5																						
		total					100				80																						
raw score		M					13.7	16.5	13.2	6.0	49.4	8.5	19.0	10.0	5.2	42.7																	
		F					11.6	13.4	13.4	7.2	45.6	7.1	6.6	13.3	5.2	32.3																	
rounded		M					14	16	13	6	49	9	19	10	5	43																	
		F					12	13	13	7	45	7	7	13	5	32																	
quota slots		M					14	17	13	6	50	9	19	10	5	43																	
		F					12	13	13	7	45	7	7	13	5	32																	
by region		total	26	30	26	13	95	16	26	23	10	75	total																				

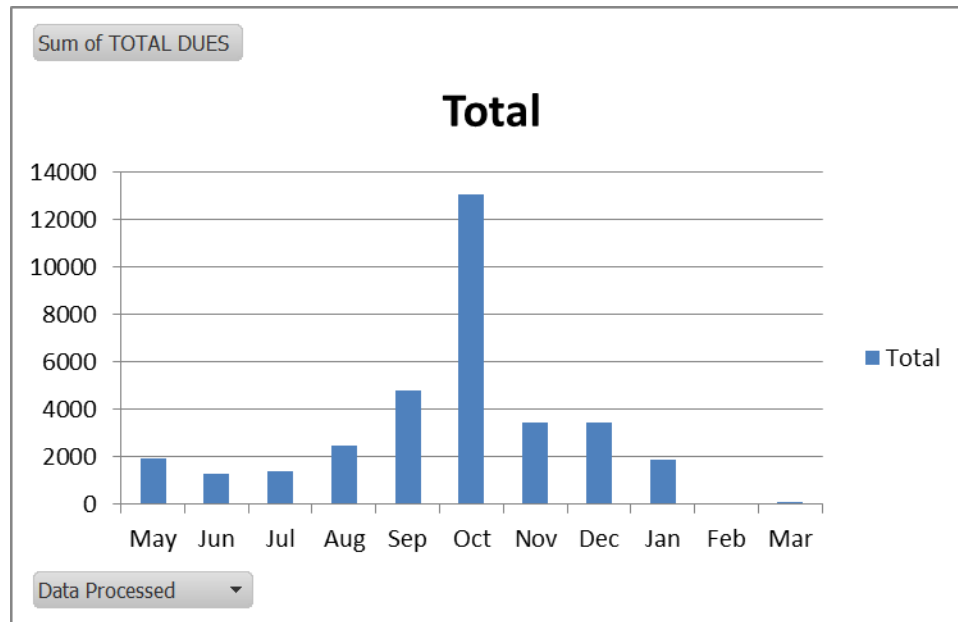
Final tuning of Quotas to address fractions of a person
 o calculate the quota distribution to 0.1 digit
 o round: 0.5 rounds down, 0.6 rounds up
 o Flag those region's/ex groupings that had a .5 round down
 o Calculate the difference between the total quota allotment and the number calculated thus far
 o where there is a difference, add 1 person to each flagged group (step 3) starting with the smallest region until no points remain.

Membership Income

Total income from Memberships this year was \$33,940. This represents a 3.1% decrease from the 2012 Dues (\$35,040). With USSA Dues Management Fees (5%=\$1697), the net income was \$32,423.

Dues	Refund	Late	Donation	Invl'd	Total
\$32,390	-\$175	\$1,725	\$0	\$0	\$33,940

There continues to a huge spike in income in the month of October. This coincides with the USSA Last Renewal date.



Late Fees equated to a total of \$1,725. The following Late Fees were collected per month

Oct	\$360
Nov	\$510
Dec	\$585
Jan	\$270
TOTAL	\$1,725

Observations

Memberships for Foreign citizens, while less of an issue from previous years, continues to be a challenge. The information provided to these USSA members on the need to take out State level registration remains unclear and is often misunderstood. Although this has been raised to USSA, it is unlikely to be addressed for the foreseeable future.

- A suggestion to PARA would be to enhance www.paracing.org with clearer procedures for both National and Foreign registration process.
- PARA Clubs should continue to use the USSA website to generate membership lists. This will help protect any sensitive membership data as a whole.

Looking Ahead

1. USSA Dues Management fees will continue at 5% service fees for registration. With the BOD confirmation an increase in the membership rates for the 2013/14 season will not be pursued, we have confirmed to USSA the same rate structure as in previous years
2. PARA continues to have growth in the younger Age Categories and as an organization will need to address the larger volume of participants. It may become more beneficial in the next few years to separate the U12/U14 Championship event into individual events.

Respectfully submitted,

David R. Bond