

PARA Membership & Quotas Report – 2015/16 Season

April 30, 2017

Linda Finnerty – Membership Chairperson

Membership Levels

Overall Membership

The overall PARA Membership level saw an increase in the 2016/17 season. The increase is primarily represented by the new USSA Category “Alpine General” and an increase in U10

2011/12 - 1215 total members

2012/13 - 1183 total members

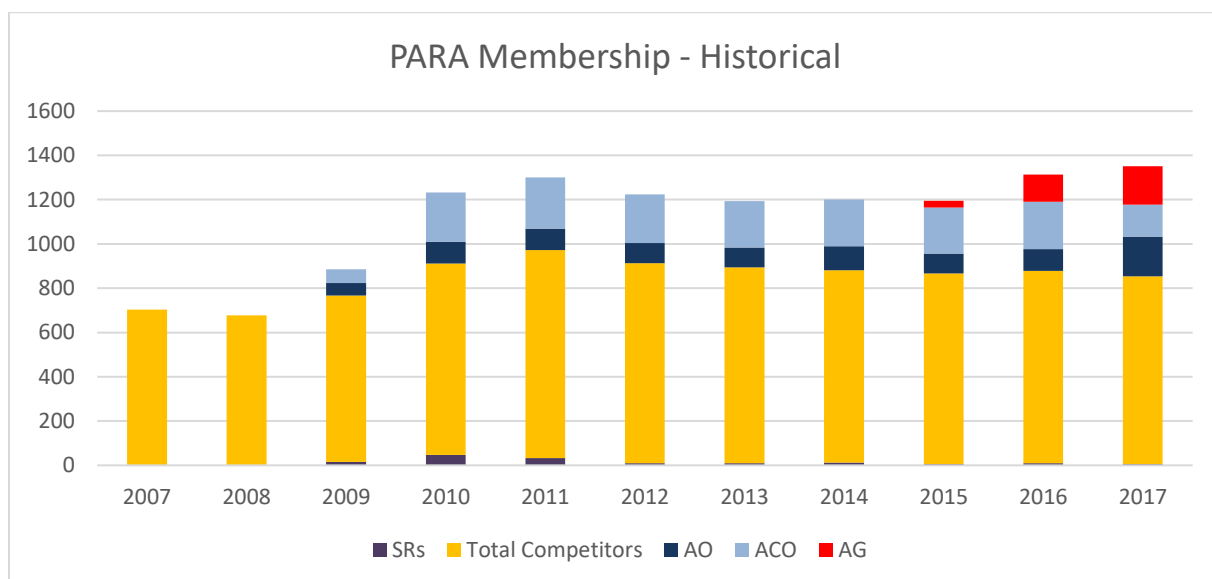
2013/14 – 1197 total members

2014/15 – 1218 total members

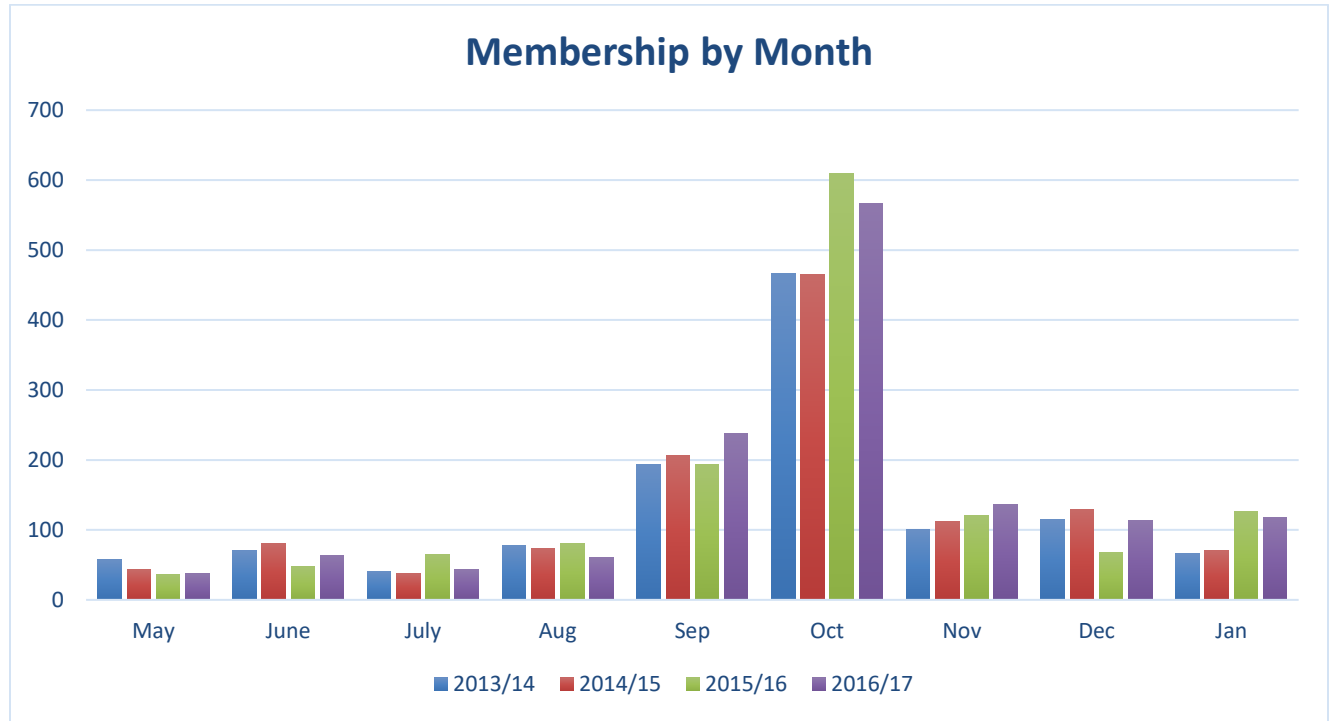
2015/16 – 1345 total members

2016/2017 – 1378 total members

The below chart illustrates the membership levels over the past years separating the Total Membership between Officials, Competitors and the new USSA Category “Alpine General” added in the 2015/16 season.

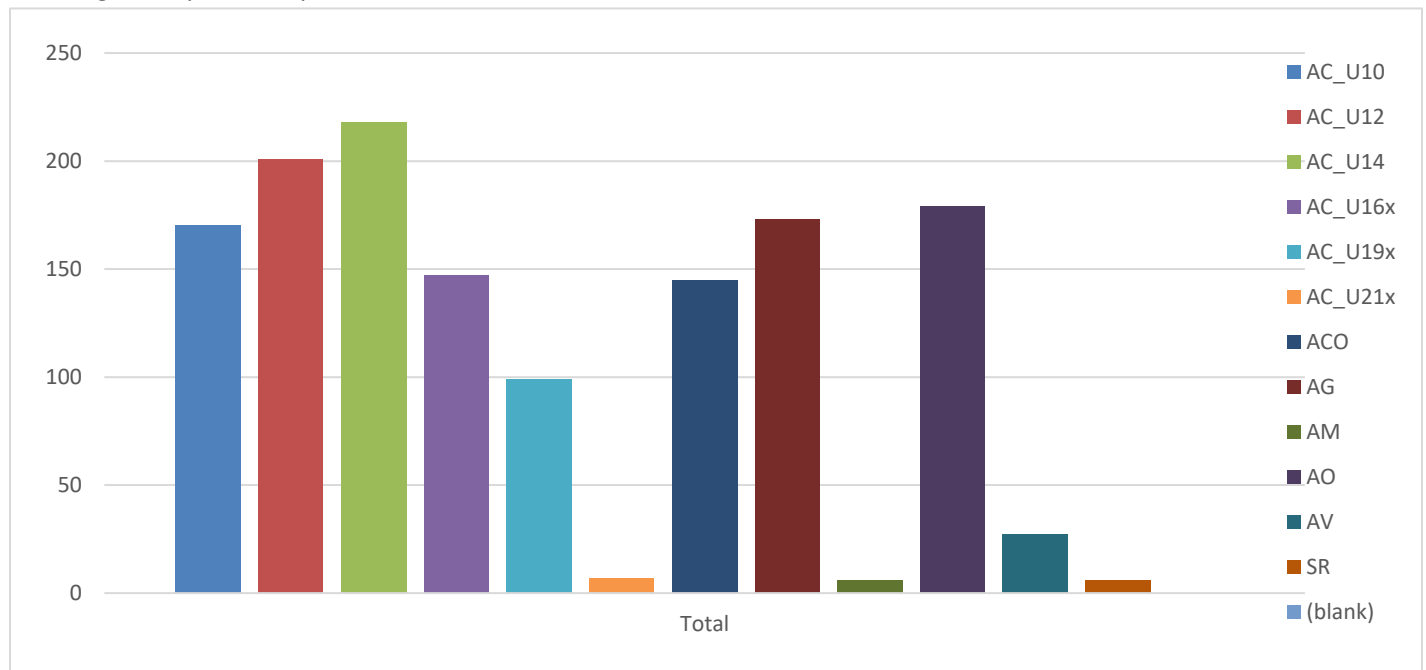


By Month Membership Signup

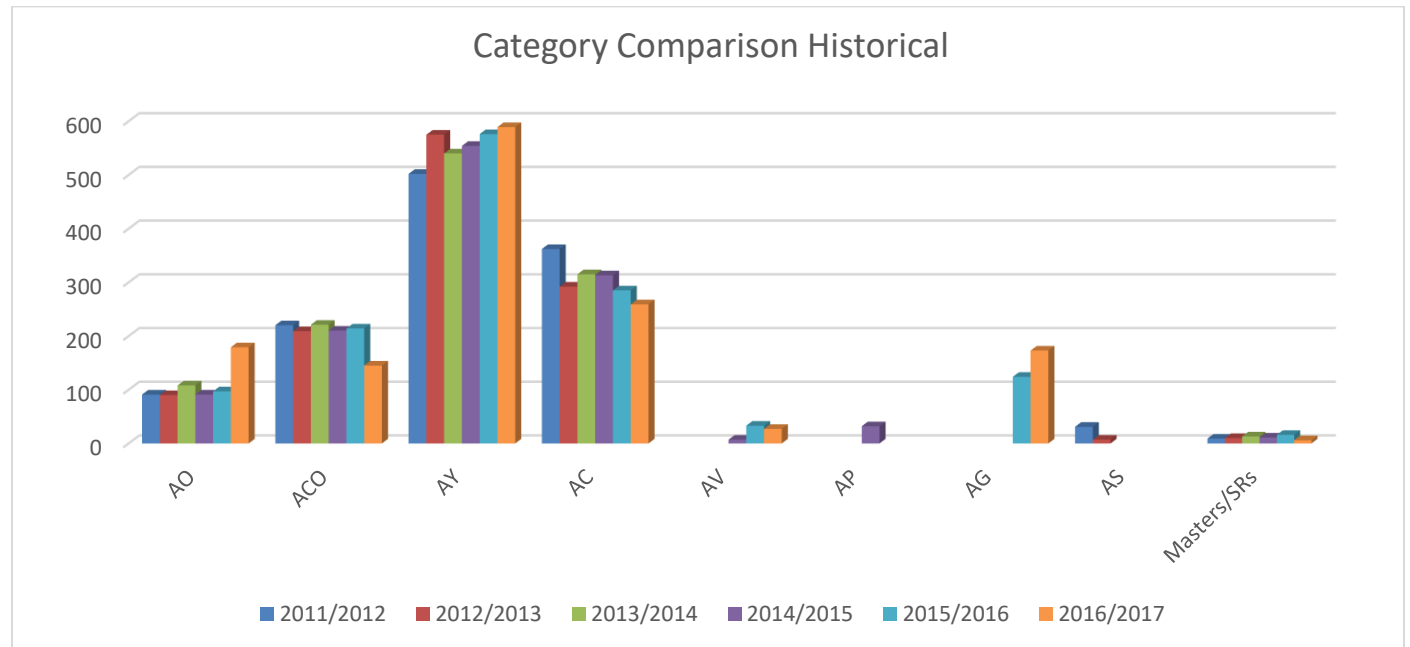


USSA Licensing Comparison

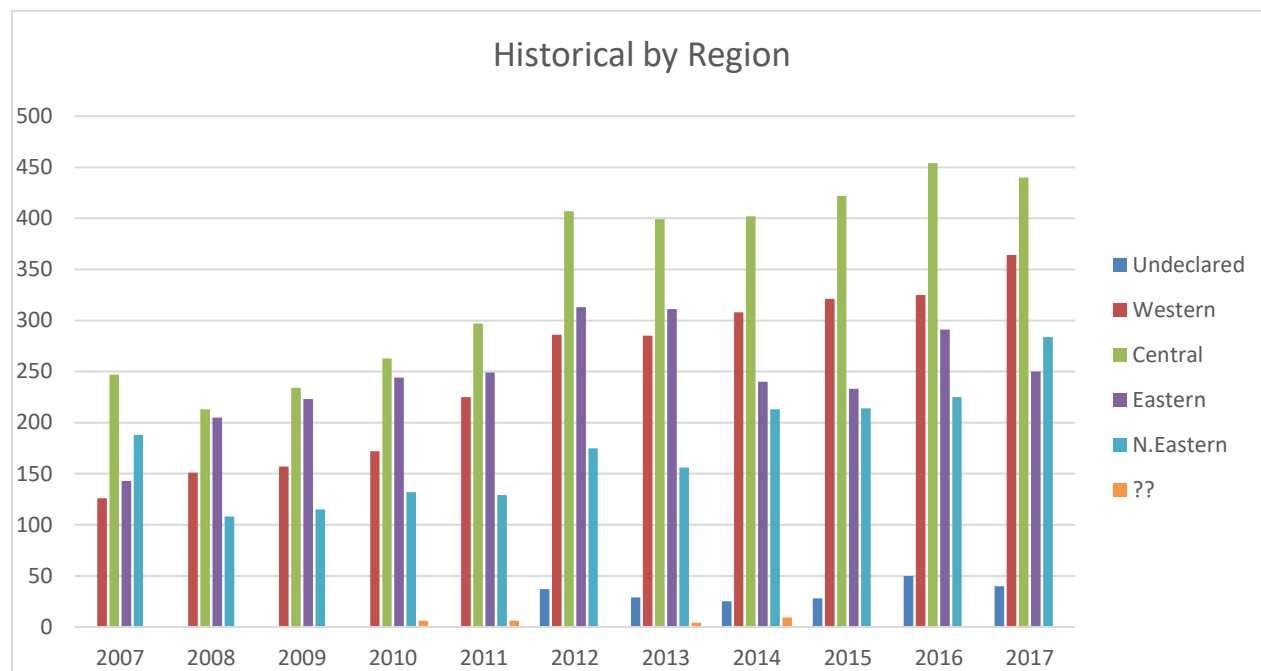
The below chart compares the USSA Licensing within this calendar year showing the licenses which individuals obtained. The first three bars are the Alpine Youth, followed by the next three columns showing the Alpine Competitors



The next table is a comparison between the past seasons showing where the changes Licensing changes have occurred. An analysis by Age Category is not possible from previous years due to the USSA Age Change which occurred in the 2012/13 Season. However, there is a comparable analysis starting with the 2011/12 Season through the 2016/2017 Season.



PARA Regional Historical Comparison



Comparison Membership by Region

Row Labels	Count of USSA_ID
?	
IND	40
? Total	40
Central	
LMRT	88
SRRC	133
SSRT	5
TMART	80
WTSEF	134
Central Total	440
Eastern	
BMRT	151
JFBB	91
MMST	8
Eastern Total	250

Northeastern

EMSC	101
PASEF	167
SHWN	16

Northeastern

Total	284
--------------	------------

Western

BKRT	17
DCWST	101
FREESTYLE	2
HVRC	94
WPRC	150

Western Total	364
----------------------	------------

Grand Total	1378
--------------------	-------------

Age Classification Analysis

The following compares the Categories between 2014/15, 2015/16 and 2016/2017.

2014/15 Membership - USSA 'U' Age Groupings

Count of USSA ID	Column Labels																Grand Total		
	U08	U10	U12	U14	U16	U18	U21	SR	AC AM	AC ACO	AM AM	AM ACO	AO AO	AO ACO	AO AP	AP AP		AV	
?	1	1					3	2				1		10	8		1	1	28
Central	10	39	73	73	54	38	9	2	3		2	3	1	39	65	1	8	2	422
Eastern		16	48	48	36	22	1			1	2	2		9	47			1	233
Northeastern	1	22	40	34	31	23	3	1			4		1	14	36		3	1	214
Western	10	43	56	64	36	19	3				1			18	52		17	2	321
Grand Total	22	121	217	219	157	102	19	5	3	1	9	6	2	90	208	1	29	7	1218

2015/16 Membership - USSA 'U' Age Groupings

Count of USSA	Column Labels														Grand Total
Row Labels	AC_U10	AC_U12	AC_U14	AC_U16x	AC_U19x	AC_U21x	SR	ACO	AG	AM	AO	AV			
?	1	3	2	1	1	2	2	15	4	2	16	1		50	
Central	66	67	77	57	36	3	2	65	34	3	39	5		454	
Eastern	16	44	44	40	26		1	36	4	2	9	3		225	
Northeastern	34	37	43	32	21	2	3	43	45		15	16		291	
Western	46	49	47	40	23	1	1	55	37		18	8		325	
Grand Total	163	200	213	170	107	8	9	214	124	7	97	33		1345	

2016/17 Membership - USSA 'U' Age Groupings

Count of USSA		Column Labels											Grand Total
Row Labels	AC_U10	AC_U12	AC_U14	AC_U16x	AC_U19x	AC_U21x	SR	ACO	AG	AM	AO	AV	Grand Total
?		2	1		1	3	1	3	4	2	23		40
Central	69	58	65	49	28	2	1	46	62	1	57	2	440
Eastern	10	47	58	38	27		1	27	11	2	26	3	250
Northeastern	31	43	45	21	21		3	25	50		29	16	284
Western	60	51	49	39	22	2		44	46	1	44	6	364
(blank)													
Grand Total	170	201	218	147	99	7	6	145	173	6	179	27	1378

Membership Attrition Year over Year

5-year Attrition Trend in USSA Alpine Membership

The attrition rates from U14 up are staggering.

USSA 5-Year average attrition trend	
U14 to U16	-31%
U14 to U18	-53%
U14 to U21	-70%
U14 to Senior	-83%

USSA membership figures especially from the last two seasons (FY14 and FY15) show an increase in attrition as athletes move from the U16 to U18 ages jumping to 34% and 37% respectively, while other years and age group jumps average out to approximately 30%. For the last three seasons (FY13-FY15) the attrition as athletes move from U18 to U21 jumped sharply to 39%, 40% and 41%. There is a gap between high school and college participation and the transition to masters or club league racing.

PARA Attrition Trend Comparison

Membership Attrition using U14 as Basis						
Base	2014/15		2015/16		2016/17	
<i>U14 Membership</i>	219		213		218	
<i>U14 to U16</i>	157	-28.31%	170	-20.19%	147	-32.57%
<i>U14 to U18 (U19 in 2015/16)</i>	102	-53.42%	107	-49.77%	99	-54.59%
<i>U14 to U21</i>	19	-91.32%	8	-96.24%	6	-97.25%

Quotas

Quota percentages remained relatively the same however the number of participants in PA Championships was reduced due to the reduction in the field size.

PARA Membership 2016/2017 Season

In the event that the actual value calculated from the percentage of the population falls below the minimum number or above the maximum number designated, that minimum or maximum number shall be used for the field size.

U16s:

The total number of athletes invited to the U16 Derby would be 50% percent of the PARA membership in the U16 age class, with a minimum of 70 athletes and a maximum 90. The min and max include the discretionary.

U14s:

The total number of athletes invited to the U14 Derby would be 40% percent of the PARA membership in the U14 age class, with a minimum of 70 athletes and a maximum 90. The min and max include the discretionary.

U12s:

The total number of athletes invited to the U12 Derby would be 40% percent of the PARA membership in the U12 age class, with a minimum of 70 athletes and a maximum 90. The min and max include the discretionary.

Quotas

Class >>		80 AC_U12					87 AC_U14					74 AC_U16x				
Region		Western	Central	Eastern	Northeastern		Western	Central	Eastern	Northeastern		Western	Central	Eastern	Northeastern	
Age Class >>>		U12					U14					U16				
PARA Membership by Region + Gender	M	28	36	33	28	125	19	37	28	22	106	22	27	23	7	79
	F	23	22	14	15	74	30	28	30	23	111	17	22	15	14	68
Total		51	58	47	43	199	49	65	58	45	217	39	49	38	21	147
PARA Distribution by Region + age class	% of Total	26%	29%	24%	22%	100%	23%	30.0%	27%	21%	100%	27%	33%	26%	14%	100%
Gender Breakdown in Region	%M	55%	62%	70%	65%	63%	39%	57%	48%	49%	49%	56%	55%	61%	33%	54%
	%F	45%	38%	30%	35%	37%	61%	43%	52%	51%	51%	44%	45%	39%	67%	46%
Age Class >>>		U12					U14					U16				
Quotas	slots	79.60					86.80					73.50				
	discretionary	5.00					5.00					5.00				
total		84.60					91.80					78.50				
raw score	M	11.2	14.4	13.2	11.2	50.0	7.6	14.8	11.2	8.8	42.4	11.0	13.5	11.5	3.5	39.5
raw score	F	9.2	8.8	5.6	6.0	29.6	12.0	11.2	12.0	9.2	44.4	8.5	11.0	7.5	7.0	34.0
rounded	M	11	14	13	11	49	8	15	11	9	43	11	14	12	4	41
rounded	F	9	9	6	6	30	12	11	12	9	44	9	11	8	7	35
		79					87					76				
quota slots	M	11	14	13	11	49	8	15	11	9	43	11	14	12	4	41
	F	9	9	6	6	30	12	11	11	9	43	9	11	8	7	35
quota slots by region	total	20	23	19	17	79	20	26	22	18	86	20	25	20	11	76
Discretionary		5					4					5				

Looking Ahead

1. USSA Dues Management fees will continue at 5% service fees for registration. With the BOD confirmation, an increase in the membership rates for the 2017/18 season will not be pursued, we have confirmed to USSA the same rate structure as in previous years
2. Institution of USSA Direct Deposit. USSA offered payment for your division or state dues by direct deposit for those interested. Instituted in the 2014/2015 season and has cut down the time in which funds are transferred from USSA to PARA.
3. Alpine General and Alpine Official increased likely at the costs to ACO. AG continues to grow and PARA should consider a plan for this resource base. How do we convert AG into AO/ACO?
4. PARA should consider discussing the qualifications for athletes to be considered toward quotas for post-season events. These qualifications should reflect the numbers of athletes committed to participating in the majority of season events.

Respectfully submitted,

Linda Finnerty